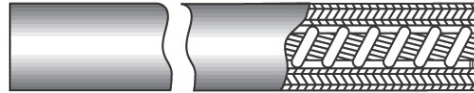




Manual systems - Accessories

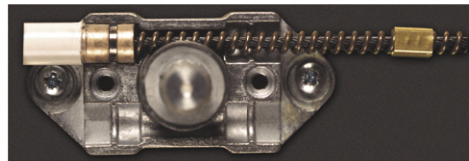
Conduit 213230 and Cable TIVH

The unique "Clearline" conduit, used exclusively in all Teleflex Control opening systems has many features. Protected by a PVC outer cover, the basic construction is of tinned steel further complimented by Rigidex' low friction liner. On-site decisions regarding conduit routing can be made to suit the prevailing conditions.



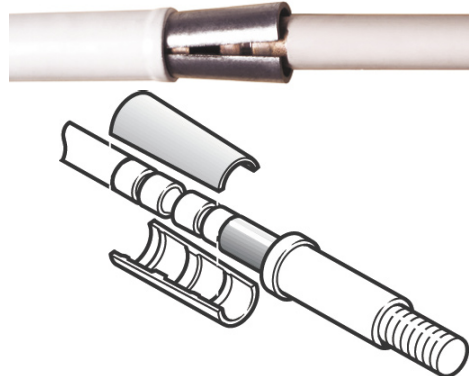
Core TBC

This Teleflex helical core designed for use with all chains and operators, provides smooth efficient and enduring service.



Conduit Connector 205690

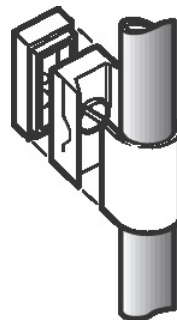
This construction time saving device is designed for ease of application, the neat slip on connector is applied using the combination tool supplied, and can be used with both types of conduit.



Conduit Saddle

212840
212841
212842

A neat inconspicuous saddle for surface mounting of conduit and 'P' clips for concealed locations.





Manual systems - Accessories

Locking Opener

Designed for fall back bottom hung windows this opener is designed with economy in mind yet still retains the benefit of remote control.



Junction Box 714610

Important in any window control system enables subsidiary control to be taken off a main parent control unit.

Smoke Control-use unlined Conduit 213230

Use of a special bending tool (contact sales) allows bending of the conduit to the contours of the building site. The conduit is supplied in increments of 3 meters. Cable throughout Clearline conduit can also be supplied separately in coils to be cut to length on site. Helix overwound (prevent fraying at ends) construction.

